

# KEY TO YOUR DEVELOPMENT

## FOREIGN AFFAIRS DEPARTMENT

Address: Liela iela 14, Liepaja, LV - 3401, Latvia

Phone: + 371 634 07762

Fax.: + 371 634 24223

E-mail: [acentrs@liepu.lv](mailto:acentrs@liepu.lv)



Published by financial support of European Commission

Drawn up by Foreign Affairs Department

Design: AdDiction

Fotos: Public Relations Office, Ruslans Šulga

Information and photos is compiled from web sites: [www.liepaja.lv](http://www.liepaja.lv),  
[www.latvia.lv](http://www.latvia.lv), [www.tava.gov.lv](http://www.tava.gov.lv), [www.wikitravel.org](http://www.wikitravel.org), [www.li.lv](http://www.li.lv), [www.viaa.gov.lv](http://www.viaa.gov.lv),  
[www.liepajaturisms.lv](http://www.liepajaturisms.lv).

Liepaja 2013

[www.liepu.lv/en](http://www.liepu.lv/en)

## CONTENT

Map Of Latvia .....	4
Latvia Today .....	5
Higher Education .....	5
Facts About Latvia .....	6
Liepaja .....	7
Arriving In Liepaja .....	8
Getting Around .....	10
Liepaja By Night .....	11
Food Culture .....	12
Sport .....	14
Health Care .....	15
Liepaja Sightseeing .....	16
Cost Of Living Per Month .....	17
Liepaja University .....	18
Why Liepu? .....	20
Research Institutions .....	21
Library .....	24
Academic Year .....	25
Diploma And Diploma Supplement .....	25
Student Activities .....	26
Internationalization .....	28
Student Review .....	30
Quality Of Studies.....	31
Accommodation .....	32
Faculties .....	33
Basic Study Profiles .....	34
International Study Programmes .....	35
Application Procedure .....	40
Scholarships .....	41
Useful Links .....	42



## MAP OF LATVIA

Latvia faces Sweden from across the Baltic Sea and has 309 miles of coast. On land, Latvia borders with four countries: Estonia, Belarus, Russia, and Lithuania. View a map of Latvia.

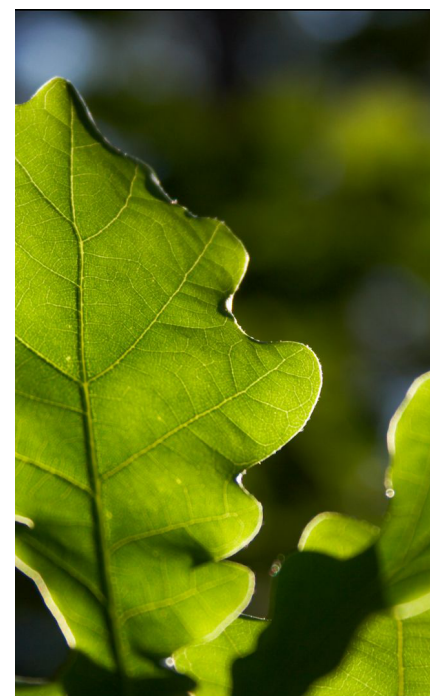


## LATVIA TODAY

Latvia today is rediscovering herself, creating a new outlook and proudly displaying a revitalised national presence on the European scene. The rest of the World is rediscovering Latvia as well. It has been found as a second greenest country in the world. With it's wide forests and untouched nature, sandy beaches located a stone's throw away from cities with ancient history and culture, rich architecture and spectacular sights. Latvia is a country with a language, culture and attitude all it's own – yet with a national identity shaped by its dynamic of Baltic Sea region and tough but inspiring historical influence.

## HIGHER EDUCATION

Rights to apply for studies in higher education institution are held by all those who have completed a secondary education as well as graduates from the four-year vocational program and from all the specialized secondary education programs. If a certificate of secondary education has been obtained abroad, it must first be submitted for analysis to the Academic Information Centre, where it is evaluated, passing a conclusion on the validity of the foreign certificate in Latvia.



## FACTS ABOUT LATVIA

Area: 64,589 sq.km  
Regions: Kurzeme, Zemgale, Vidzeme, Latgale  
Metric units: 1 km = 0.62 mile; 1 m = 39.37 inches  
Currency: Latvian lat (LVL), 1 lat equals 100 santims  
Capital: Riga  
Population: 2 041 763 (2012)

Language and Alphabet: Latvian, sometimes called Lettish, is one of the two surviving Balt languages, the other being Lithuanian. Older generation Latvians will know Russian, while the younger ones know English, German, Russian. Latvians are proud purists of their language and hold contests for its correct use. Latvia uses the Latin alphabet with 11 modifications.

Religion: The Germans brought Lutheranism to Latvia, which dominated until the Soviet annexation. Today, a majority – about 40% of Latvians claim to have no affiliation with any religion. The next two largest groups are both Christian with Lutheranism at 19.6%, and Orthodox at 15.3%. An obscure neopagan religious movement, Dievturība, claims to be a revival of the folk religion that existed before the Germans arrived with Christianity in the 13th century.

Latvia's weather features a temperate maritime climate, with mild summers, moderate winters and frequently high levels of humidity and precipitation.

The average temperature: in summer: 15.8°C (in the capital 16.1°C), in winter: -4.5°C (in the capital -3.8°C).

The warmest month: July; the coldest month: January.

The average precipitation amount – in summer: 195 mm, in winter: 116 mm.

In general, the best time to visit Latvia is May – September, when daytime temperatures are in the 70s F/20-25 C, with nights ranging 40-60F/4-15 C. The coldest months are January and February, when temperatures are in the 20s F/-7 to -1 C, although it can get much colder.

Enjoy winter by skiing – Latvia offers many mountains, which are suitable for beginners and professionals.

In summer you can relax and get tanned in the beach of Liepaja. And if it's getting too hot you can cool down by jumping in the pure waters of Baltic sea.

Latvia joined the EU and NATO in 2004. Planning to introduce Euro as national currency in 2014.

## LIEPAJA

Liepaja is a city of successful changes as the people living here on the stretch of sand between the Amber Sea and the lake for more than 750 years have always been tough, wise and daring. The charm of the city is concealed in its special atmosphere. Perhaps a bit restrained and harsh, yet also noble and rebellious. Sometimes calm, sometimes swirling. Genuine and truthful - this is Liepaja.

Liepaja has grown from a small village into the third largest city in Latvia with the population of 85 000 people. In 2010 Liepaja celebrated its 385th anniversary.

Liepaja is a great city for students because it's rich in well-established cultural traditions. Liepaja is the home of the oldest professional Latvian theater, the only professional symphony orchestra outside Riga, a puppet theater, a number of folklore groups and numerous choirs. Organ music as well as jazz hold an important place in the cultural life of the city. The Summer Sound and Fontaine Festival have become the central pop and rock festivals in the city.

After the construction of the new Olympic Center, Liepaja has become a popular place for national and international sports events. In 2009 Liepaja was hosting EuroBasket Women championship, European championship in Thai boxing as well as a number of national competitions.

Liepaja is surrounded by water. There are the Baltic Sea coast, two big lakes and some smaller ones as well as there are four channels in the city. Liepaja Lake is the fifth largest lake in Latvia. Liepaja beach is a great place to relax. Those who want to get the first tan, show up in the beach as soon as the snow is gone and the sun gets warmer. However, unforgettable sunsets in the sea can be enjoyed throughout the year.

Liepaja is a port city. For passengers there is a ferry line Liepaja-Lübeck (Germany), but those traveling with a yacht can moor it in the Trade Channel almost in the downtown.





## ARRIVING IN LIEPAJA

Liepaja is easily accessible. It is located 220 km (136 mi) west from Riga, 100 km (62 mi) north from Klaipeda, a city in Lithuania, on the coast of the Baltic Sea. You can get to Liepaja by plane, train or bus from Riga, and by bus from Klaipeda or Palanga. Normally a bus ride from Riga to Liepaja takes about 3 hours 30 minutes, and a bit less than 2 hours from Klaipeda. You can get to Liepaja by your own car from Riga even faster than by public transport.

### BY PLANE

As of the end of 2009, all regular airline services to and from Liepaja were suspended. Check AirBaltic.com website. Palanga airport is just about 65 km (40 mi) south; it has direct routes all year round. Riga International airport (the largest airport in the Baltic states) offers many direct flights to Europe and Asia, including cheap Ryanair, AirBaltic and Wizz Air routes) it is located 220 km east from Liepaja city.

### BY CAR

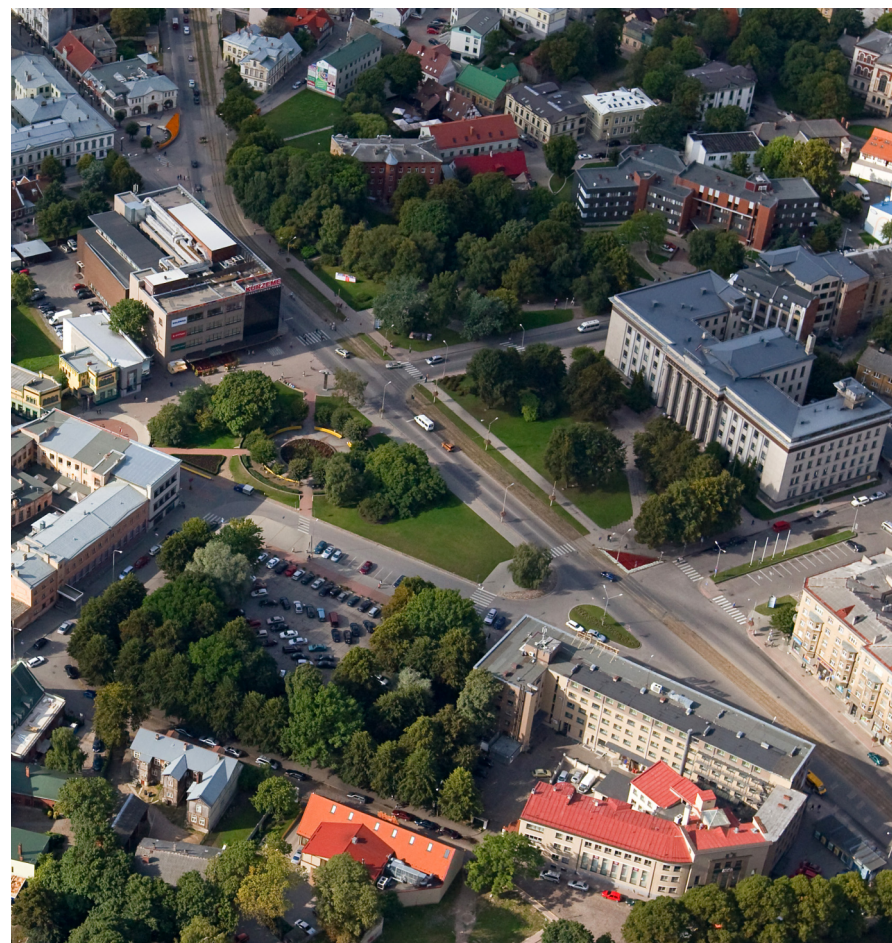
There are two main roads going to Liepaja. One is A9 from Riga direction, and the other is A11, from Klaipeda. Other roads are P111 to/from Ventspils, and many regional roads.

### BY BUS

Liepaja is connected by bus service with Riga (multiple times every day), Klaipeda, Palanga, Ventspils, Kuldiga and other towns, as well as smaller villages in Liepaja region. The Bus station is located some distance away from the center. Take the tram to the south to get to the center (take the tram at a tram stop, which is on your right side when you quit the Bus station building. Do not cross the tram-railway, which is a wrong direction! The Liepaja regional bus terminal is located in the southern part of the center, at Sienatirgus. But all busses go to the main Bus station. A ticket to Riga costs around 6,40 Lats (9 Euros). Liepaja bus company offers you the possibility to get from Liepaja to the airport "Riga" and also in the opposite direction from the airport "Riga" to Liepaja without entering the centre of Riga by using the bus route Liepaja-Riga-Liepaja. To get from Liepaja to the airport "Riga", purchase in addition to the bus ticket a voucher for 1 LVL at the bus driver. To get from the airport "Riga" to Liepaja, on the day of travel reserve your seat in the bus by phone +371 63422754 or +371 26393 694.

### BY TRAIN

A nice and relatively quick train runs twice a week to and from Riga. It leaves the Liepaja railway station (which is the same building as the bus station) at 6AM, and arrives at Riga railway station at 9:10AM. The train from Riga leaves at 6:30PM and arrives in Liepaja at 9:37PM. These trains also stop at Skrunda, Saldus, Dobeles and Jelgava. On the train you can watch a DVD movie or use a vending machine to have a cup of coffee. Despite the fact that the train actually takes a longer route – about 240 km {149 mi} compared to 220 km {136 mi} if you go by bus – because it goes through Jelgava, it takes a bit less time to go to Riga by train





## GETTING AROUND

There are four types of public transport in Liepaja city – tram, bus, minibus, taxi. There you can download all timetables of Liepaja Public transport: [www.liepajastransports.lv/en](http://www.liepajastransports.lv/en).

**TRAM** has only one line. It runs from the southwest, along beaches, through the center, to Jaunliepaja, a place with a flea market and ends near the metallurgic factory. It operates from 5AM till midnight and costs 0.40 Ls if ticket is bought in a boutique, or 0.50 Ls, if you buy it from the tram driver. Ticket must be validated in one of three yellow validators in the tram, which will print date and time on the ticket. The ticket is valid for one ride. Tram is the best transport to get to/from the Railway/Bus station to/from the city center. If you are going to catch the morning train to Riga, do so, because trams operate in early morning, but not as frequently. A ride from the center to the station takes approximately 8 minutes. An electronic tram ticket is also available by sending SMS, but this might be complicated for those who don't have local mobile phones.

**BUS** has many lines, the most important are 1,3,4,7,8 – with these you can get from the city center to Karosta and back. You can get to the Southeastern part (Ezerkrasts) to see Meynard's church and Liepaja Lake by 3,4, 10, 15, 912. Costs 0.50 Ls (€0.70). Buses stop at bus stops throughout the city. Tickets can be bought in boutiques 0.40 Ls or from the driver. Tickets must be validated in the bus by inserting them in an electronic validator just like in trams. Some, but not all, buses have audio announcement system for next stop and a LED screen in front of the bus displaying the next stop name. In case of going to Karosta you will most likely want to go till the last stop, so don't worry. An exception is bus number 8, which goes far north in summer house and garden district Skede near the sea, which is kind of too far for Karosta, however is the best bus to get as far as the Jewish holocaust memorial or the Northern fortress.

**MINIBUS** numbers 1, 2, 3 also serve Karosta. They cost 0.50 Ls (€0.70). To stop a minibus, you have to wave your hand. To stop a minibus when you are in it, you have to demand the driver to do so. Tickets must be validated in the bus by inserting them in an electronic validator just like in trams and buses.

**TAXI** is relatively expensive compared to other types of transport, but still cheaper than in Western Europe. This is, however, the only public transport available in the night (approximately from 12:30AM-5AM). There are some places in the city center and near the Bus/Railway station where Taxi cars use to assemble, but you can call +371 63422222, +371 63488888 or 8500 (free Wi-Fi).

## LIEPAJA BY NIGHT

In a city that boasts more rock musicians than any other places in Latvia, it's never hard to find a party. Whether you're into jumping around with youngsters at a punk rock concert or dancing until the small hours of the morning at a disco, you won't be disappointed with what Liepaja has to offer.

- **The Fontaine Palace**, Stūrmaņu iela 1, [www.fontaine.lv](http://www.fontaine.lv)
- **Klondaika**, Stendera iela 3, [www.klondaika.lv](http://www.klondaika.lv)
- **Red Sun Buffet**, Pasta 2, [www.facebook.com/redsunbuffet](http://www.facebook.com/redsunbuffet)
- **Big 7**, Baznīcas iela 14/16, [www.big7.lv](http://www.big7.lv)



## FOOD CULTURE

Liepāja's dining scene offers a little bit of something for everyone. Although casual, inexpensive bistros can be found at nearly any street corner, an ever-increasing number of cosy, interesting restaurants have sprouted up all over town. Eat a pork chop and potatoes for under 3Ls (around 4 Euros) at a local cafeteria, try the reindeer carpaccio with a glass of cabernet sauvignon in an upmarket restaurant or order fish and chips at a neighbourhood pub.

It is important to know that in Latvia the whole concept and meaning of words Cafeteria (Kafejnīca), Canteen (Ēdnīca) and Restaurant (Restorāns) are different than they would be understood in other countries. A Cafeteria or Kafejnica is not just a coffee shop. Usually you can have all meals that you would probably expect in a restaurant. The difference is that in Kafejnica sometimes you bring your food to your table yourself. However, some Kafejnicas have waiters, but these are then something in between Kafejnica and Restorāns. Restorāns is usually more or less top class place. Ednica is a canteen of schools, universities, factories etc. They are very cheap, but sometimes have limited access.



### Some specific food in this area:

- Biezpiena sierīņš - curd actually, but with sweet taste
- Kefīrs - specific dairy product (vegetarian)
- Ķīselis - thickened stewed fruit (usually cherry or rhubarb) served for dessert (vegetarian)
- Griķi - buckwheat, eaten as main course
- Skābēti kāposti - sauerkraut
- Pīrāgi - bacon and onion wrapped in a thin-ish yeast dough. A real classic of Latvian cuisine.

### Other mentionable food and dishes:

- Kūpināts siers - smoked cheese - goes very well with wine
- Eklērs - éclair - cake with sweet cream inside
- Zutis - eel - fish that looks like a snake, European eel
- Frikadeļu zupa - meatball soup with bullion (high fat)
- Biešu zupa - red colored beetroot soup (vegetarian and non-vegetarian)
- Rosols - salad with sour cream (Salad Olivier), usually non-vegetarian
- Kotletes - meatballs served with potatoes
- Gailēņu mērce - chanterelles sauce in sour cream, usually served with potatoes (vegetarian)
- Siļķe ar biezpienu - herring served with cottage cheese.

### Fine restaurants:

- **Pastnieka māja**, Fr.Brīvzemnieka iela 53, [www.pastniekamaja.lv](http://www.pastniekamaja.lv)
- **Vecais Kapteinis**, Jēkaba Dubelšteina iela 14, [www.vecaiskapteinis.lv](http://www.vecaiskapteinis.lv)
- **Medus**, Palmu iela 5, [www.porins.lv](http://www.porins.lv)
- **Upe**, Lielā iela 11, [www.livahotel.lv](http://www.livahotel.lv)
- **Olive**, Klaipēdas iela 104c, TC Baata, [www.restoransolive.lv](http://www.restoransolive.lv)





## SPORT

Liepāja is not only a city of culture, but also very active – local football, basketball, ice-hockey, handball, lacrosse and floor-ball teams are successfully competing in the highest leagues of the national championships. Men's ice-hockey and football teams participate also in international tournaments. Liepāja hosts international sport events: chess tournament Liepāja Castling, Līvū alus Basketball Cup and one of Davis Cup tennis tournaments.

However, the heat is really on in all meanings of these words when Rally Kurzeme gets on the way in the middle of July. In the previous years this event was a stage of national, Russian and European championships attracting world class rally stars and thousands of spectators to Liepāja and its beautiful vicinity. In winter 2013 in Liepāja's and Ventspils's region were hosting FIA European Rally Championship Liepāja-Ventspils.

Liepāja is famous also for its sports schools. It is worth to mention football and ice-hockey clubs, which not only promote such kinds of sports in Latvia, but also take important role in preparation of new sports generation in the country.

- **Ice-Hockey Arena**, [www.lmhalle.lv](http://www.lmhalle.lv), Brīvības iela 3/7, +371 63481840, +371 63481842
- **Dzintara Bowling**, [www.dzintaraboulings.lv/liepaja/](http://www.dzintaraboulings.lv/liepaja/), Peldu iela 66, +371 63480080
- **Royal Fitness**, [www.royalfitness.lv](http://www.royalfitness.lv), Fontaine Royal Hotel 2nd floor, Sturmanu iela 1, +371 26331013
- **Liepāja's Olympic Center**, [www.loc.lv](http://www.loc.lv), Brīvības iela 39, +371 63483888
- **Liepāja's sport house "H sporta nams"**, Brīvības iela 117, Liepāja, +371 63488044



## HEALTH CARE

Liepāja has a history in a field of health care – the Medical School has educated nurses and other medical personnel for many decades. Today Liepāja has a modern central hospital, which is becoming a Regional Health Care Centre, providing services not only to people from Liepāja, but also inhabitants of the whole Western Kurzeme region.

Improvement of health care is impossible without co-operation and Liepāja has excellent co-operation with Bergen Community (Norway) in fighting infectious diseases, as well as in other spheres, e.g. improving the services of school nurses, co-operation between schools, the city and parents in fighting drug abuse. More information about these and other projects on web site of Baltic Health Organisation.

- **Liepāja Dentist Polyclinic**, K.Zāles laukums 2, +371 63427480
- **Veciepāja Primary Health Care Centre**, Republikas iela 5, +371 63422451, +371 63426466, +371 63429156
- **Jaunliepāja Primary Health Care Centre**, Aldaru iela 20/24, +371 63425429



LIEPAJA SIGHTSEEING

You'll need at least a couple of days to see everything that Liepaja has to offer. Spend the night in a haunted prison, climb up to the clock tower of Holy Trinity Church for spectacular views of the city, soak up the atmosphere at Peter's Market, explore the ruins of a tsarist fort or just spend time at the Blue Flag beach.

On the spotlight

Karosta Prison - Latvia's very own version of Alcatraz, but without the water, the sharks and the view of the Golden Gate bridge. The ominous brick building has however been witness to some ghastly crimes over the past century.  
www.karostascietums.lv  
Invalidu iela 4, Karosta

Holy Trinity Lutheran Church - is unique about few things that will please everything: your eyesight, ear and heart. Its` well preserved interior masterpieces, art works, 13-meter high sacred altar and one of the biggest organs in the world cheers its` listener's ears with an outstanding music.  
Lielā iela 9

Promenade - It is a passage, where you can see water with some interesting ships from one side, and on the other side - reconstructed old storage buildings, nowadays housing shops, restaurants, etc.  
Vecā Ostmala 40

"Liepaja-notes to follow" is the simplest way to see Liepāja and get to know its most important tourist sites. You can start this walking tour at any of the sights along that way where you see the musical notes.

Northern Forts - a long system of concrete fortifications were once part of the Naval Port's defences, but they were destroyed after a friendship and cooperation agreement was signed with Germany in 1908.  
Jātnieku iela, Karosta

Rose Square - the square housed a new market from 18th century, later market was moved away and place got a look of a green spot. The first roses were planted here in 1910, in recent times monument was created, depicting names of the sister cities of Liepaja and their symbols.



COST OF LIVING PER MONTH

Food		EUR 130
Materials for studies		EUR 15
Accommodation		EUR 36-90
Phone costs, newspapers		EUR 15
Clothes, hobbies, amusements		EUR 150

TOTAL EUR 345-400

## Liepaja University (LiepU)



18

Liepaja University is one of the oldest higher education institutions in Kurzeme region with large experience and academic traditions, where it is possible to study more than 40 study programs and to acquire humanitarian sciences and art, natural sciences, mathematics and information technologies, business management, pedagogical education and educational sciences, social sciences and social welfare.

Liepaja University is new in respect to changes and development. The strategic aim of the university activities is scientific research and creative activities as the main precondition of sustainable development of Liepaja University. The university is open to international collaboration, which promotes studies based on science and research, development of knowledge society and introduction of research results into national economy. It is anticipated to develop research fields and themes according to the state research priorities and needs of social partners. The university continues improving the activities relating to introduction of innovations and popularisation of scientific cognitions by promoting youth interest in science and understanding scientific activities and creativeness as successful career base in any field.










We understand the global nature of education, but also take into account regional and national interests. This promotes quality of education and efforts directed to international cooperation and student exchange.

Jānis Rimšāns, Rector.

- An accredited state higher educational establishment, which implements study programmes at all three study levels: basic studies, Master and Doctorate studies.
- Every year about 45 study programmes are implemented.
- Full-time and part-time studies.
- 28 professors and associate professors.
- The number of elected teaching staff members - 100, among them more than 55 % - Doctors of Sciences.
- About 2000 students.
- The higher educational establishment was founded in 1954 on the basis of Teacher Training Institute.
- LiepU has its own anthem, coat of arms, logo and a banner.

Liepaja University is one of the universities of the Republic of Latvia. Liepaja University is a symbol of education, science and culture of Liepaja and Kurzeme region that provides with competitive, internationally recognized varied education. The LiepU Develops innovative research, ensures sustainability of society development, economic knowledge development in Latvia as a lawful partner in European Union.

19

 <p>Full-time and part-time studies.</p>	 <p>28 professors and associate professors.</p>	 <p>About 2000 students.</p>
 <p>Every year about 45 study programmes are implemented.</p>	 <p>Liepaja University is one of the universities of the Republic of Latvia.</p>	 <p>LiepU has its own anthem, coat of arms, logo and a banner.</p>
 <p>An accredited state higher educational establishment, which implements study programmes at all three study levels: basic studies, Master and Doctorate studies.</p>	 <p>The number of elected teaching staff members - 100, among them more than 55 % Doctors of Sciences.</p>	 <p>The higher educational establishment was founded in 1954 on the basis of Teacher Training Institute.</p>



## Why LiepU?

- It's Europe
- High-quality education
- Highly qualified lecturers
- Small study groups
- Individual approach
- Low tuition fees
- City of wind
- Near the beach
- Cheap living costs
- Active student life
- Easy to get around the city
- Inspiring to live in
- Wide range of activities for students

20



## RESEARCH INSTITUTIONS

LiepU has been registered as one of the scientific institutions in Latvia. The scientific institution functions as four research institutes in the University, also several research centres and laboratories. The research activities are coordinated by the LiepU Scientific Council and Dr.philol. Ieva Ozola, Vice- Rector responsible for research.

### **Institute of Educational Sciences (IES)**

Director Anita Lidaka, Dr.paed.

21

LiepU Institute of Educational Sciences started functioning on 1 September 2007. The IES common research theme is "Education Quality Dimensions in the Knowledge Society (2007 – 2012)", which in compliance with different trends in education are dealt with by six research centres:

- Civic Education Centre
- Alternative Education Centre
- Art Education Centre
- Personality Development Research Centre
- Environmental and Health Education Centre
- Social Work Research and Study Centre

### **Kurzeme Institute of Humanities (KIH)**

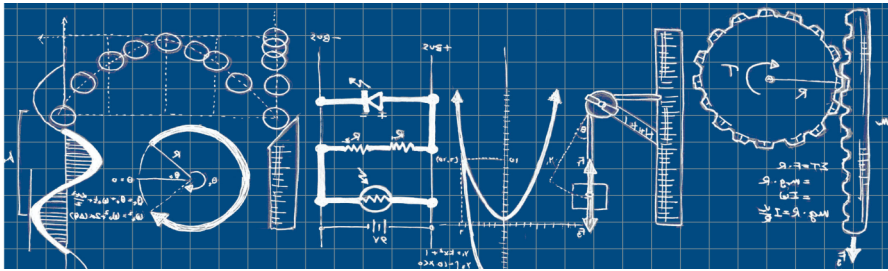
Director Edgars Lāms, Dr.philol.

LiepU Kurzeme Institute of Humanities started its activity on the 1st of September 2007. KIH has the following research fields:

- Latvian Folklore Studies
- History of Latvian Literature
- History and Theory of the Theatre and Cinema
- History and Theory of Music
- Latvian Diachronic and Synchronic Linguistics

In KIH there functions Folklore and Language Centre.

The aim and mission of the KIH is scientific research of Latvian cultural heritage, especially in Kurzeme region, research of language and current culture process. To activate and popularize regional cultural heritage. Scientists of KIH are involved in National Research programme "Letonika", "National Identity" etc.



22

### **Institute of Management Sciences (IMS)**

Director Daina Celma-Zida, Dr.oec.

LiepU Institute of Management Sciences (IMS) started its work on the 1st of September 2008. The IMS aim is to develop management science in compliance with the present-day European and World research experience, accentuating introduction of innovations in different branches of national economy, with a special focus on the intellectual capital impact on the development of Kurzeme region.

IMS objectives and research fields:

- University of Liepaja contribution of the economics development of Kurzeme region;
- Local government sector management at the territorial reform;
- Local government supports the development of business models;
- Educational leadership;
- Curriculum management;
- Application of the principle of team work;
- Change management education
- Knowledge management.

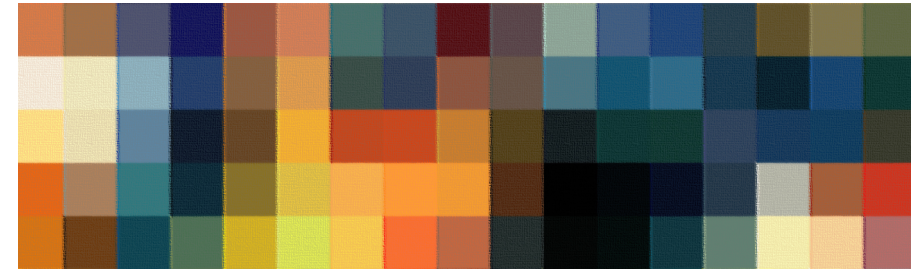
Institute takes part in several projects financed by Latvia-Lithuania Cross Border Cooperation Programme 2007-2013 and Europe Social Fund and Europe Regional Development Fund.

### **Institute of Mathematical Sciences and Information Technologies (IMSIT)**

Director Jānis Rimšāns, Dr.math.

LiepU Institute of Mathematical Sciences and Information Technologies started functioning on the 1st of November 2006. Its specialisation is high performance computing methods and production of mathematical models on mathematics, physics, environment and economic-physics themes.

[www.imsit.liepu.lv](http://www.imsit.liepu.lv)



### **Art Research Laboratory (MPLab)**

Head Santa Mazika, Mg.art.

23

Art Research Laboratory was established on the 1st of November 2006 as a structural research unit of LiepU Faculty of Humanities. Its aim is to carry out scientific research in the field of new media, art, culture and education and to develop dynamic, innovative and friendly research environment. Through cooperation with the New Media Culture Centre "RIXC" Art Research Laboratory actively participates in formation and development of new media art in Liepāja.

### **Sociological Research Centre (SPC)**

Head Arturs Medveckis, Mg.sc.educ.

The Social Research Centre at Liepaja University was founded in 2003.

Main study courses of SRC are social welfare; human development and quality of life; research of public opinion; quality of education; cultural sociology; biographic research; history and methodology of sociology.

SRC has implemented researches for LiepU, local municipality as well as national and international projects cooperating with wide range of researchers. SRC provides study, methodological and other research materials, both printed and electronic.

Great experience in applied researches and biographical researches as a result of which an electronic archive and printed books were created containing the life stories of working and retired employees of LiepU.

## LIBRARY

The LiepU library is housed in the central building of the University at Lielā iela 14. The library was founded in 1954; its stocks contain 100 000 different items: 80 000 books, about 10 000 periodicals, collections of laws, dissertations, audio-visual and other materials. The library attends to the needs of the students of the University, its teaching staff and other personnel. The readers can use the lending library, the reading room and the electronic resources reading rooms with free access.

To borrow books, one needs an ISIC card valid for a year. Since 1992 system "Alise" (Advanced Library Information Service) has been functioning in the library. The readers have an opportunity of using the electronic catalogue, which includes both the alphabetic and systematic catalogue.

A bibliographer-consultant will help you in your search for the necessary information. If the necessary printed matter is not held in the library the reader can get any item from other libraries of Latvia, as well as from foreign libraries through inter-library loans system (SSBA).

A joint catalogue of the LiepU library can be found on the Internet: <http://alise.liepu.lv/Alise/lv/home.aspx>. The Internet provides access to on-line catalogues of the biggest libraries of the world and databases accessible to the public in different fields of science. Newspapers are kept there for three years, magazines for 5 years, but the periodicals meeting the profile of the University – 4 years.

The library is equipped with free access computers, with the help of which students can obtain information not only about the library funds and services, but also use them for writing qualification papers. Everybody in need can make use of the paid services in the library - binding the printed materials, copying etc.



## ACADEMIC YEAR

The academic year begins in September and is over towards the end of June. As a general rule, it comprises 40 weeks of lectures, seminars and practical work and is mainly divided into 2 semesters.

Examination sessions take place at the end of each semester (first session starts in January and second – in June).

Students are examined separately in each subject and the total number of examinations in a semester is usually between four and six, but it depends on a study programme. Students who fail in an examination, can generally try to pass it again during the session or afterwards.

## DIPLOMA AND DIPLOMA SUPPLEMENT

After completion of the accredited study programme University of Liepaja issues its students nationally recognised diplomas.

This diploma supplement follows the model developed by the European Commission, Council of Europe, UNESCO/CEPES. The purpose of the supplement is to provide objective data and academic and professional recognition of qualifications (diplomas, certificates etc.).



The diploma supplement is designed to provide description of the nature, level, context, content and status of the studies successfully completed by the individual named on the diploma. It should be free from any value judgements, equivalence statements and suggestions about its recognition. Information in all eight sections should be provided. Where information is not provided, the reason should be explained.

Procedure for the issuance of diplomas and diploma supplements shall be determined by Cabinet of Ministers Regulations No 656, "Procedure for Issuing Nationally Recognised Higher Education Documents". dated 2 October 2007.

Graduating from the University of Liepaja all students receive a diploma supplement free of charge in Latvian and English.



## STUDENT ACTIVITIES

Student council - mainly focuses on the academic or educational processes related things, culture, sports, students, social welfare and, of course, much more, directly or indirectly related to student life.

Liepaja University's women's choir "Atbalss" in 2009 celebrated its 50th birthday. LiepU student choir is always new, because the compositions are constantly changing. Choral number of participants from 80 to 100 singers in the past. The choir gives concerts quite frequently in Liepaja University, in churches and concert halls throughout the Latvia.



The Folk dance collective "Banga" was established on the 18th March, 2009. As non-profit organization on the 25th March, 2011. Their essential value is the aim to develop strong, ambitious, united and continuously developing folk dance collective in Liepaja. During those two years they have already done great things. And it is just a beginning...

Their future participants they are greeting with words: "Come and be on the top of the wave!" ("banga" (latvian) – "wave")



Non-traditional dance studio "Arabesque" offers classes at oriental dance, Spanish Flamenco dance and remedial gymnastics. They organize concerts, workshops, lectures. Studies mission is to introduce the participants to the body of foreign culture and art, with dances and various recovery systems, to expand the horizons of participants.



Studio of music - Liepaja University provides an opportunity for everyone, with or without musical training to learn musical skills and express themselves, performing different styles of music. Studio (for a fee) offers different kinds of ensembles to play music, to acquire Keyboard (piano, synthesizer) and guitar playing (classical, electric, bass), as well as solo and ensemble singing.

University offers to take part in these sport activities – fitness, floorball, football, gymnastic, basketball, frisbee.



## INTERNATIONALIZATION

50 international lecturers	100 outgoing mobilities	55 incoming mobilities
About 65 partner universities	International activities	International conferences

28

### ERASMUS PARTNER UNIVERSITIES:

Belgium: Lessius University College, Limburg Catholic University College

The Czech Republic: University of West Bohemia

Denmark: University College Lillebaelt, University College of Northern Denmark

Cyprus: University of Cyprus

France: University of Toulouse II le Mirail

Finland: Tampere University of Applied Sciences

Germany: Jade University of Applied sciences, Augsburg University, University of Applied Sciences Schmalkalden, Johannes Gutenberg University Mainz, University of Hildesheim, Heilbronn University, The Bauhaus University Weimar, Offenburg University of Applied Sciences

Greece: Technological Educational Institution of Epirus, Technological Educational Institute of Serres

Ireland: Froebel College of Education

Lithuania: Vytautas Magnus University, Klaipeda University, Siauliai University, Utena University of Applied Sciences, Klaipeda State College, University of Applied Sciences, Vilnius University, Lithuanian Academy of Music and Theatre, Vilnius University of Applied Engineering Sciences

The Netherlands: Hanze University of Applied Sciences, Groningen, NHTV Breda University of Applied Science, Utrecht School of The Arts

Norway: Bergen University College, Volda University College, The University of Stavanger

Poland: The State School of Higher Professional Education in Elbląg, Gdansk University of Physical Education and Sport

Portugal: Fafe Superior Institute of Studies, Polytechnic Institute of Santarem, Polytechnic Institute of Leiria

Romania: University of Art and Design of Cluj-Napoca

Slovakia: Matej Bel University

Spain: University of Granada

Sweden: Linnaeus University, Stockholm University

Switzerland: Zurich University of the Arts, University of Applied Sciences and Arts Northwestern Switzerland

Turkey: Kocaeli University, Anadolu University, Karabuk University, Ondokuz Mayıs University Samsun, Sakarya University

29

### OTHER PARTNER UNIVERSITIES:

Soongsil University (Korea)

Kokshetau State University named after Sh.Ualikhanov (Kazakhstan)

Novgorod State University (Russia)





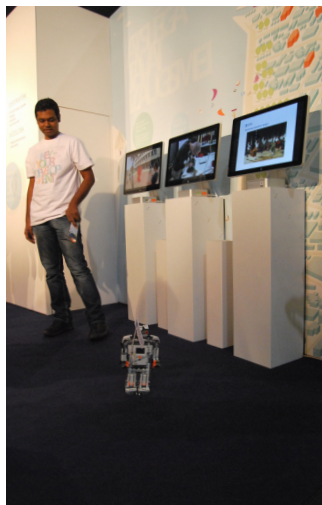
## STUDENT REVIEW

Raj Bharath Adamaram Seshadri (India), Master of Information Technology study programme student

"LiepU" the nickname for the Latvian public university called "Liepaja University", is situated at the center of economic zone of Baltic States as it is recognized and funded by European Union and Latvian government.

On one hand, it has developed into a university where it creates job opportunities and produces start-ups by its alumni of students, since it provides solutions to business incubators in Europe and the world.

On the other hand, it also carries out research activities as it is funded by various organizations along with hosting international conferences. Hence, it provides numerous opportunities to all its students, as the latest updates are viewed by its students and the world at: [www.liepu.lv](http://www.liepu.lv)



## QUALITY OF STUDIES

Liepaja University puts effort into improving a quality of studies:

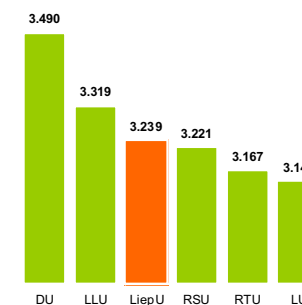
ISO certificate 9001:2008

Surveys of students and alumni

Surveys of employers

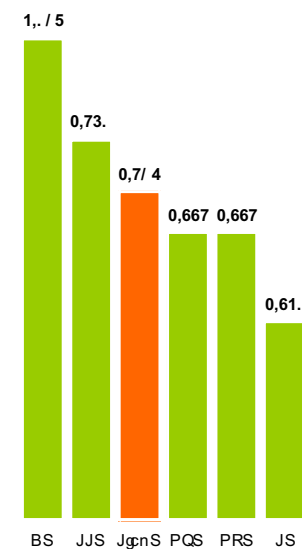
National quality assurance

KNOWLEDGE AND SKILLS (5 POINTS ARE MAX):



Information source: Survey of alumni, Association of Latvia's Universities, 2011

QUALITY OF HIGHER EDUCATION (5 POINTS ARE MAX):



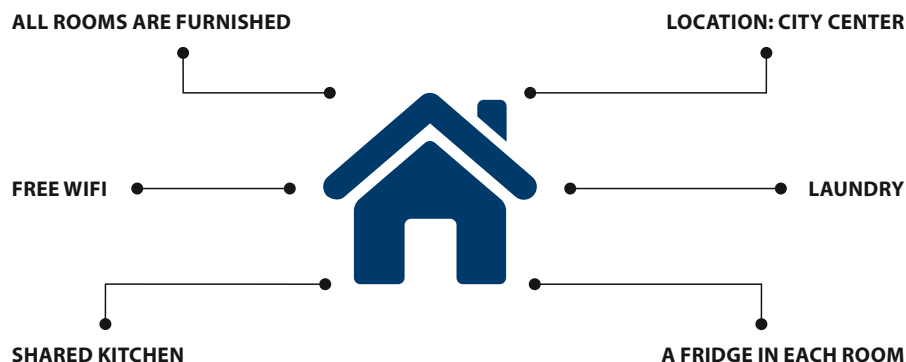
Information source: Survey of alumni, Association of Latvia's Universities, 2011



## ACCOMMODATION

Due to high demand, students should give the Foreign Affairs Department ample notice of their intention to live in student dormitories. International students are usually housed in shared rooms (2-3 persons) with a common kitchen, shower and toilets. Linen, blankets, pillows, and kitchen utensils are provided. Rent is EUR 36 per month for a room (if in the room live 2 and more persons), EUR 50 (2 persons) and EUR 90 (1 person).

Liepaja University Student Hostels rooms are furnished, a fridge is in each room, Free Wifi and there is a laundry.



If student do not wish to stay at a dormitory, private housing arrangements should be made before arriving in Latvia. Rent can vary from EUR 145 – 290 per month.

## FACULTIES

Studies at Liepaja University are organized between:

### FACULTY OF NATURAL AND SOCIAL SCIENCES

Dean Māra Zeltiņa, Dr.biol.

Vice-dean Anita Jansone, Dr.sc.comp.

Vice-dean Irina Strazdiņa, Dr.psych.

The aim of the faculty is to provide an opportunity to acquire competitive academic and professional higher education in the field of Natural Sciences, Mathematics, Information Technologies, and Social Sciences, to develop inter-branch study programmes and research, to carry out studies based on research and to create knowledge, study, research and further education environment according to the society needs.

### FACULTY OF HUMANITARIAN SCIENCES AND ART

Dean Zanda Gūtmane, Dr.philol.

Vice-dean Ina Klāsone, Dr.paed.

The aim of the Faculty of Humanities and Art Studies is to create opportunities for students to acquire academic and higher professional education of good quality in Humanities and Arts as well as in interdisciplinary study programmes related to these fields, to develop research, creative and innovative activities in humanities and art. There are two study fields functioning in the Faculty – study programmes in humanities and art.

### FACULTY OF PEDAGOGY AND SOCIAL WORK

Dean Ilze Miķelsone, Dr.paed.

Vice-dean Linda Mackēviča, Dr.paed.

Vice-dean Svetlana Lanka, Mg.sc.educ.

The aim of the Faculty of Pedagogy and Social Work is to ensure opportunities to acquire qualitative, competitive higher academic and professional education in Pedagogy, Health Care and Social Welfare in the professional and academic study programmes corresponding to the intellectual and material resources of the Faculty, and taking into the consideration regional and state interests and needs, as well as the demands of European space for higher education. There are two study fields in the Faculty of Pedagogy and Social Work - teacher education and educational science, and health care and social welfare. The study programmes supervised by the Faculty belong to one of these study fields.

## BASIC STUDY PROFILES

Social Sciences and Entrepreneurship	Natural Sciences, Mathematics and IT	Teacher Education and Pedagogy
Humanitarian Science and Art	Social Welfare	Services

34

### Bachelor study programmes

- Baltic philology and culture
- Business and organization management
- Communication management
- Culture management
- Computer science
- Design
- European language and culture studies
- Information Technology
- Mathematics
- Mechatronics
- Nature and renewable energy resources management and engineering
- New media art
- Photo Art
- Physics
- Social worker
- Speech therapy
- Teacher

- Tourism management and recreation

### Master study programmes

- Information Technologies
- Master of education sciences in pedagogy
- New media art
- Career consultant
- Latvian philology
- Art
- Literary work and communication
- Social work
- Management sciences
- General education teacher

### Doctoral level study programmes

- E- studies Technologies and management
- Pedagogy
- Linguistics
- New Media Art



## INTERNATIONAL STUDY PROGRAMMES

### BACHELOR

#### Computer Science

3 years, ACADEMIC BACHELOR degree of Natural Sciences in Computer Science  
Study programme director: Dzintars Tomsons, dzintars.tomsons@liepu.lv

Fee per year: 2200 EUR

Admission requirements:

General Certificate of Secondary Education (official transcript is required);

About the programme:

The central aim of the programme is to give academic education in the field of Information and Communication Technologies.

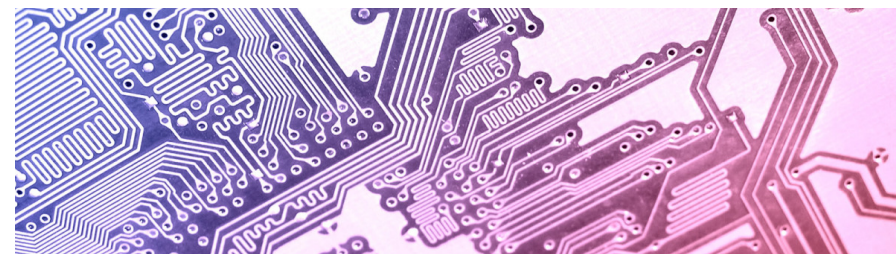
Programme structure:

Size of Bachelor study programme is 120 credit points (CP), and the duration of the programme is 3 years. The programme consists of three parts:

- A part (92 CP) – compulsory courses of Computer Science and Mathematics;
- B part (24 CP) – compulsory courses, which expect deeper education of students and development of their professional skills and abilities;
- C part (4 CP) – free optional courses chosen according to students' interests.

Compulsory subjects:

- Programming
- Data base technologies
- Management of software development projects
- Computer architecture
- Courses of discrete mathematics
- Courses of continuous mathematics
- Computer Science and numerical methods
- Term paper
- Bachelor paper



35



## Physics

3 years, ACADEMIC BACHELOR degree of Natural Sciences in Physics  
Study programme director: Jānis Rimšāns, janis.rimsans@liepu.lv

Fee per year: 2200 EUR

Admission requirements:

General Certificate of Secondary Education (official transcript is required).

About the programme:

The aim of the programme is to give academic education in the field of Physics. Programme includes courses of Physics and Mathematics as well as laboratory works.

Programme structure (120 CP):

- Compulsory (A) part – 80 CP, including Bachelor exam 2 CP and Bachelor paper 10 CP
- Compulsory (B) part – 38 CP, including restricted option courses depending on specialization:
  - B(1) Mathematical Physics 10 CP;
  - B(2) Engineering Physics 10 CP;
  - B(3) scientific basics of school Physics 10 CP
- Free option (C) part 2 CP;
- Term paper 2 CP

Compulsory subjects:

- |  |                                |
|--|--------------------------------|
| • General Physics                      | • Semiconductor physics        |
| • Theoretical mechanics                | • Theory of relativity         |
| • Optics and spectroscopy              | • Non-linear physics           |
| • Thermodynamics and molecular physics | • Hydrodynamics                |
| • Electromagnetism                     | • Computational fluid dynamics |
| • Quantum mechanics                    | • Mathematical calculus        |
| • Field theory                         | • Numerical methods            |



## Information Technology

4 years, PROFESSIONAL BACHELOR Degree in Information Technology, qualification of Software Engineer  
Study programme director: Dzintars Tomsons, dzintars.tomsons@liepu.lv

Fee per year: 2200 EUR

Admission requirements:

General Certificate of Secondary Education (official transcript is required).

About the programme:

The main goal of the programme is to prepare highly qualified specialists in Information Technology, providing possibilities to acquire professional higher education and competencies that promotes development of creative personality and professional career.

Programme structure:

The size of the Professional Bachelor study programme is 160 credit points (CP) (or 240 ECTS), and the duration of the programme is 4 years. The programme consists of three parts:

- Part A (57 CP) – compulsory courses of Information Technology, Mathematics, Economics, Law, and Management;
- Part B (97 CP) – compulsory courses providing advanced competencies in Information Technology and Software Engineering, practice in industry, and development of Bachelor thesis
- Part C (6 CP) – free optional courses chosen according to students' interests.

Compulsory subjects in Information Technology and Software Engineering:

- |   |  |
|---|--|
| • Programming                           | • Information System Analysis and Design |
| • Algorithms and Data structures        | • Software Testing and Quality           |
| • Object-Oriented Programming           | • Software Agile Development             |
| • Programming Languages                 | • Computer Networks                      |
| • Development of Web-based Applications | • Information System Security            |
| • Databases                             | • Computer Architecture                  |
| • Software Project Management           | • Operating Systems                      |

## MASTER

### Information Technology

2,5 years or 3 years, PROFESSIONAL MASTER degree in Information Technology and Software Engineer or Information Technology Project Manager qualification  
Study programme director: Anita Jansone, anita.jansone@liepu.lv

Fee per year: 2200 EUR

Admission requirements:

Duration of studies is 2,5 years – Bachelor degree in Computer Sciences or Information Technologies;

Duration of studies 3 years – Bachelor degree in Mathematics or in Physics.

A thesis (5 to 10 pages) about a free chosen and topical research problem in the field of Computer Sciences or Information Technologies.

About the programme:

The Professional Master's study programme "Information technology" aim is to educate high qualification specialists for professional activity in the field of Technologies and Telecommunication with specialization in Software Engineering or Management of Information Technology projects.

Programme structure:

The student receives professional qualification of the professional Master degree, when he has fully acquired the study programme, has obtained practical skills during implementation of qualification and Master practices, has elaborated and successfully defended the diploma project and the master paper.

During the studies software engineer obtains knowledge and skills, which are necessary for elaboration of software, its introduction and maintenance according to the functionality, quality and resource conditions, organisation and management of programmer workgroups, as well as systematic improvement of knowledge and skills.

In its turn, information technology project manager acquires knowledge and skills, which are necessary for elaboration and introduction of the necessary software, planning, organizing and monitoring of maintenance projects, as well as for implementation of information technology consultations or system audit projects, and management according to the branch standards and quality requirements.

The size of the Professional Master's study programme is 100 credit points (CP) for 2,5 years, and 120(CP) for 3 years.

## New Media Art

2 years, ACADEMIC MASTER Degree of Humanities, in the sub-sector – new media art  
Study programme director: Rasa Šmite, rasa.smite@liepu.lv

Fee per year: 2200 EUR

Admission requirements:

Portfolio of recent works.

Bachelor degree of Humanitarian sciences or Professional higher education in Humanitarian, Social, Art or Educational sciences.

About the programme:

Master's study program NEW MEDIA ART is multi-disciplinary, dynamic, real practice led, research-based, oriented towards cooperation and communication. Two pathways are offered:

- ACOUSTIC ARTS / DIGITAL MUSIC

- DIGITAL NETWORKED MEDIA

Study programme was launched in September 2010. Students acquire various new media (interactive, multimedia, sound, network etc.) instruments and skills in creating art works. Key of this programme is research - including researching art processes. Emphasis is on art as research - within new media art it means that the artist is not only the creator of art work, but also researcher and practitioner of new instruments, media, technology, social process, scientific discoveries.

Programme structure:

The size of Master study programme is 80 credit points (CP), and the duration of the programme is 2 years. The programme consists of three parts:

- A part (45 CP) – compulsory courses of Research within the New Media Art and Culture environment;
- B part (15 CP) – compulsory courses, which expect deeper education of students and development of their professional skills and abilities within two branches – Acoustic Arts / Digital Music and Digital Networked Media
- Master Thesis (20 CP)

Compulsory subjects:

- Audio Culture
- New Media Art Research
- Culture Based Economy
- Interactive Media
- Photographic Media
- New Media (Art) in Cultural Environment
- Acoustic Arts / Electronic Music
- Digital Network Media
- Thesis Project

## APPLICATION PROCEDURE

APPLICATION ONLINE <http://apply.liepu.lv/>

Requirements:

- Application form
- 1 photo 3x4 cm
- Copy of passport
- Curriculum Vitae
- Motivation letter
- Official certificate of English language knowledge (IELTS 6)
- Secondary (High) School graduation Certificate and Transcript
- Bachelor degree (official transcripts required), Education documents must be accompanied by English translations of all certificates and transcripts along with approval of documents
- Order certifying payment of registration fee 100 EUR

### OFFICE OF CITIZENSHIP AND MIGRATION AFFAIRS

[www.pmlp.gov.lv](http://www.pmlp.gov.lv)

- Residence Permits
- Visas and Invitations
- Declarations of residence place
- Health Insurance

### LATVIAN LANGUAGE AND CULTURE STUDIES

Organised by Humanitarian science and Art faculty every academic year. During the first year students have intensive courses of Latvian, students have to take an examination after the course completion.



## SCHOLARSHIPS

Latvian Scholarships-

for studies in Latvian Higher Education Institution: in accordance with bilateral agreements on co-operation in education and science, the State Education Development Agency (Valsts izglītības attīstības aģentūra – VIAA) offers scholarships to students of several countries for studies in Latvian higher education institutions (HEIs). The amount of the Latvian scholarship is 350 LVL (~500EUR) per month.

European Social Fund scholarships-

for Liepāja University Master degree students of "New media art" and "Information technology" study programmes. Only student who had successfully passed the prescribed period can apply for scholarship. The amount of scholarship: 430 EUR per month.



## Information About Liepaja

General information about Liepaja - [www.liepaja.lv](http://www.liepaja.lv)

Tourism Information Office - [www.liepajaturisms.lv](http://www.liepajaturisms.lv)

Liepaja Theater - [www.liepajasteatris.lv](http://www.liepajasteatris.lv)

Cinema in Liepaja - [www.kinoballe.lv](http://www.kinoballe.lv)

Public transportation in Liepaja - [www.liepajastransports.lv/](http://www.liepajastransports.lv/)

Riga International Coach Terminal - [www.autoosta.lv](http://www.autoosta.lv)

Riga International Airport - [www.riga-airport.com](http://www.riga-airport.com)

All kind of information - [www.1188.lv](http://www.1188.lv)

The Latvian Institute - [www.latvia.lv](http://www.latvia.lv)

Ministry of Foreign Affairs of the Republic of Latvia - [www.am.gov.lv](http://www.am.gov.lv)Ministry of Education and Science of the Republic of Latvia - [www.izm.gov.lv](http://www.izm.gov.lv)

Entry Visas - [www.am.gov.lv](http://www.am.gov.lv)

Education in Latvia - [www.aiknc.lv](http://www.aiknc.lv)

Academic information center - [www.aic.lv](http://www.aic.lv)

Latvia and its towns - [www.inyourpocket.com/latvia](http://www.inyourpocket.com/latvia)

Official Latvia Tourism Portal- [www.latvia.travel](http://www.latvia.travel)

State Education Development Agency - [www.viaa.gov.lv](http://www.viaa.gov.lv)

State Fire and Rescue Service of the Republic of Latvia - [www.112.lv](http://www.112.lv)

State Police of the Republic of Latvia - [www.vp.gov.lv](http://www.vp.gov.lv)

Emergency service phone numbers - 113; 112